

Abloom

RENÉE NANNEMAN



Dragonflies Abloom Quilt
designed by: **Renée Nanneman**
Quilt Size: **63" x 75"**
Pillow Size: **24" x 24"**
Skill Level: **Beginner**



Dragonflies Abloom Quilt

Introducing Andover Fabrics new collection: **ABLOOM** by Renée Nanneman • Quilt designed by Renée Nanneman

Quilt finishes 63" x 75" • Pillow finishes 24" x 24"

These softly romantic floral prints are the perfect way to welcome in that time when flowers grace our gardens and homes. Add the dragonfly applique for an even more dramatic look. Part of the fun is in choosing unique combinations of prints to make the blocks. Directions for a throw pillow are included.

Cutting Directions

Note: Read assembly directions before cutting patches. All measurements are cut sizes and include ¼" seam allowances. WOF designates the width of fabric from selvedge (approximately 42" wide).

- Fabric A** Cut (4) borders 6½" x 63½", cut lengthwise
White Quilt only: Cut (1) rectangle 6½" x 12½"
- Fabric B** Cut (4) rectangles 6½" x 12½"
Cut (2) rectangles 5" x 12½"
- Fabric C** Cut (3) rectangles 6½" x 12½"
- Fabric D** Cut (1) rectangle 6½" x 12½"
- Fabric E** Cut (1) rectangle 6½" x 12½"
Cut (1) rectangle 5" x 12½"
- Fabric F** Cut block patches as desired
Cut dragonfly bodies as desired
- Fabric G** Cut (6) rectangles 6½" x 12½"
Cut (2) rectangles 5" x 12½"
Cut dragonfly bodies and wings as desired.
- Fabric H** Cut (3) rectangles 5" x 12½"
Cut (24) dragonfly wings (or as many as desired)
- Fabric I** Cut (6) strips 2" x WOF (42"), pieced to make the following:
2 side borders 2" x 60½"
2 top/bottom borders 2" x 51½"
- Fabric J** Cut (21) small block patches (or as many as desired)
Cut (12) dragonfly wings (or as many as desired)
- Fabric K** Cut block patches as desired
- Fabric L** Cut block patches as desired
Cut (8) dragonfly wings (or as many as desired)
- 16 Fat ¼** Cut strips 2" x WOF (21")
From strips, cut patches of various lengths as desired (Read Step 1)
- Binding** Cut (8) strips 2½" x WOF for binding
- Backing** Cut (2) lengths 42" x 71", pieced to fit quilt top with overlap on all sides

Fabric Requirements

		Yardage	Orchid	White
Fabric A	border	2 yards	862-B	863-B
*Fabric B	set	½ yard	862-C	862-C
Fabric C	set	fat ¼	862-L	862-L
Fabric D	set	fat ¼	863-B	
Fabric E	set	fat ¼	863-T	863-T
Fabric F	set	½ yard	866-P	866-P
Fabric G	set	¾ yard	869-B	862-B
Fabric H	set	½ yard	869-L	869-L
Fabric I	border	½ yard	870-G	869-B
Fabric J	set	½ yard	871-P	871-P
**Fabric K	set	fat ¼	871-T	871-T
Fabric L	set	fat ¼	871-L	871-L

Both Quilts:

17 fat ¼	set	fat ¼ each	864-C	864-P
	864-T	865-C	865-G	865-P
	866-Y	867-C	867-P	867-T
	868-T	868-Y	870-C	870-G
		870-C	870-G	870-T

Binding	¾ yard	866-P	866-P
Backing	4 yards	865-C	865-C

Additional yardage for pillow:

*Fabric B: fat ¼

**Fabric K: ½ yard

Backing (your choice): ¾ yard

Cutting for Pillow:

Fabric B

Cut (1) rectangle 10½" x 18½"

Fabric K

Cut (2) borders 3½" x 24½"

Cut (2) borders 3½" x 18½"

11 Prints of your choice:

Cut (1) rectangle 2½" x 12½"

Cut (1) rectangle 2½" x 10½"

Cut (1) rectangle 2½" x 8½"

Cut (2) rectangles 2½" x 7½"

Cut (2) rectangles 2½" x 6½"

Cut (2) rectangles 2½" x 5½"

Cut (2) rectangles 2½" x 3½"

Cut (1) dragonfly body from fabric of choice

Cut (4) wings from fabric of choice

Backing

Cut 1 square 26" x 26"

Dragonflies Abloom Quilt

Making the Quilt

1. Block Y is made with 3 pieced strips constructed of 9 various-length patches. Block Z is made with 4 pieced strips constructed of 12 various-length strips. See the Block Diagrams.

There are 5 combinations of lengths for the pieced strips. Each of these combinations results in a pieced strip that measures $12\frac{1}{2}$ " in length. Combine strips in these combinations, referring to the Block Assembly and the quilt photograph for color.

$2''-6''-5\frac{1}{2}''$ (or $6''-5\frac{1}{2}''-2''$, or $5\frac{1}{2}''-2''-6''$)
 $4\frac{1}{2}''-5\frac{1}{2}''-3\frac{1}{2}''$ (or $5\frac{1}{2}''-3\frac{1}{2}''-4\frac{1}{2}''$, or $3\frac{1}{2}''-4\frac{1}{2}''-5\frac{1}{2}''$)
 $3\frac{1}{2}''-2\frac{1}{2}''-7\frac{1}{2}''$ (or $2\frac{1}{2}''-7\frac{1}{2}''-3\frac{1}{2}''$, or $7\frac{1}{2}''-3\frac{1}{2}''-2\frac{1}{2}''$)
 $4\frac{1}{2}''-4''-5''$ (or $4''-5''-4\frac{1}{2}''$, or $5''-4\frac{1}{2}''-4''$)
 $6\frac{1}{2}''-2\frac{1}{2}''-4\frac{1}{2}''$ (or $2\frac{1}{2}''-4\frac{1}{2}''-6\frac{1}{2}''$, or $4\frac{1}{2}''-6\frac{1}{2}''-2\frac{1}{2}''$)

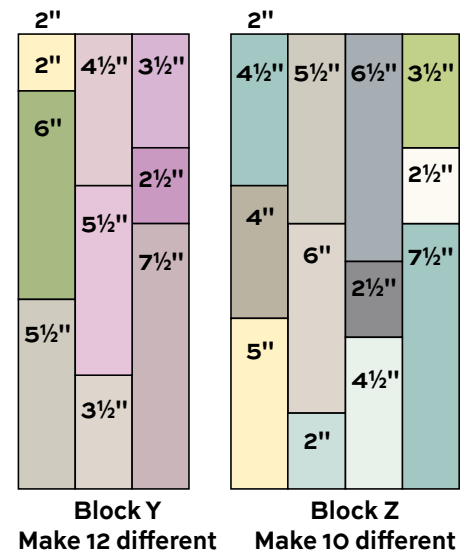
The patches should be joined in various order to give variety to the blocks. The pieced strips can be turned upside down for even more looks. We suggest that you cut strips as you need them for each block rather than attempting to decide all the combinations before sewing. Make 3 pieced strips for each Block Y. Join them side by side. Make 12 Block Y. Likewise, make 4 pieced strips for each Block Z. Join them side by side. Make 10 Block Z.

2. Refer to the Quilt Assembly for fabric placement, or feel free to arrange the blocks and rectangles as you desire. On a large flat surface, arrange 4 Block Y alternately with 5 rectangles $6\frac{1}{2}'' \times 12\frac{1}{2}''$. Make 3 rows like this. Arrange 5 Block Z alternately with 4 rectangles $5'' \times 12\frac{1}{2}''$. Make 2 rows like this. Join the rows in the order shown.
3. Sew long Fabric I borders to the sides. Sew short borders to the top and bottom.
4. Likewise, sew Fabric A borders to the sides and to the top and bottom.
5. If you plan to add dragonflies, decide whether they will be machine or hand appliquéd. Hint for ease of construction: Layer and quilt the pieced top first, and then fuse and stitch the dragonflies to it. The stitching around the appliqués finishes the edges of the dragonflies and quilts them at the same time.

Make a paper pattern of the wings and bodies. If using fusible webbing, follow manufacturer's directions and press a piece of fusible web cut larger than the wing or body to the wrong side of the chosen print. Pin a paper pattern to the fused fabric and cut out around it. Remove the paper backing. Position the fabric body to the quilt, referring to the quilt photo for placement, or as you desire. Use a machine zigzag or straight stitch with invisible thread to stitch along the edges. Then fuse and stitch the wings. Add as many or as few dragonflies as you want.

Finishing the Quilt

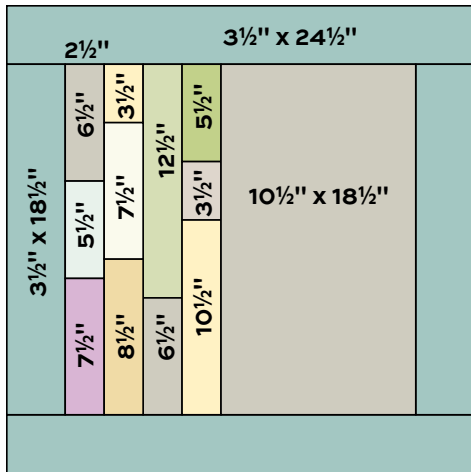
6. Layer the quilt with batting and backing and baste. Quilt in the ditch around borders and patches. Quilt around the applique if needed. Bind to finish the quilt.



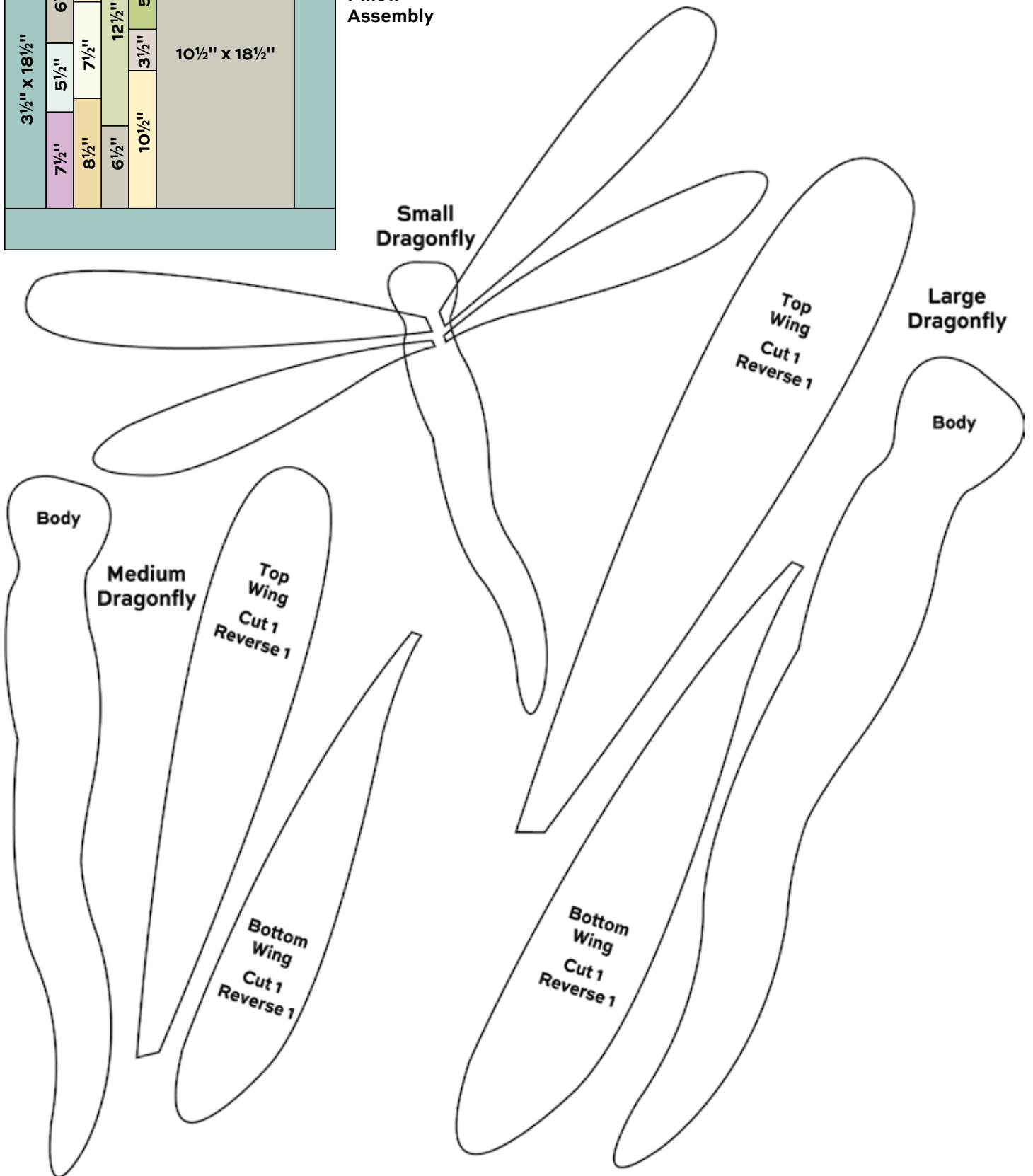
Making the Pillow

1. Position and join the rectangles into 4 columns as shown on the next page. Sew the columns together, and then stitch the large rectangle to one side.
2. Appliqué the dragonfly in place.
3. If you wish to quilt the pillow top, layer it with batting and an inner lining. Quilt as desired. For rounded corners, position a saucer or jar lid in each corner and draw along its edge. Be sure that the curve is the same in all corners.
4. Position the pillow front on top of the backing, right sides together. Pin all around. The backing will be larger than the pillow top. Stitch in a $\frac{1}{4}''$ seam, leaving a generous opening along one side, not at the corner. Backstitch at the opening to secure. Trim the backing even with the pillow front, and trim the corners. Turn right side out and use a knitting needle or chopstick from the inside to push the seam out so there are no puckers. Press the edges. Lightly stuff with polyfil or a pillow form. Stitch the opening closed.

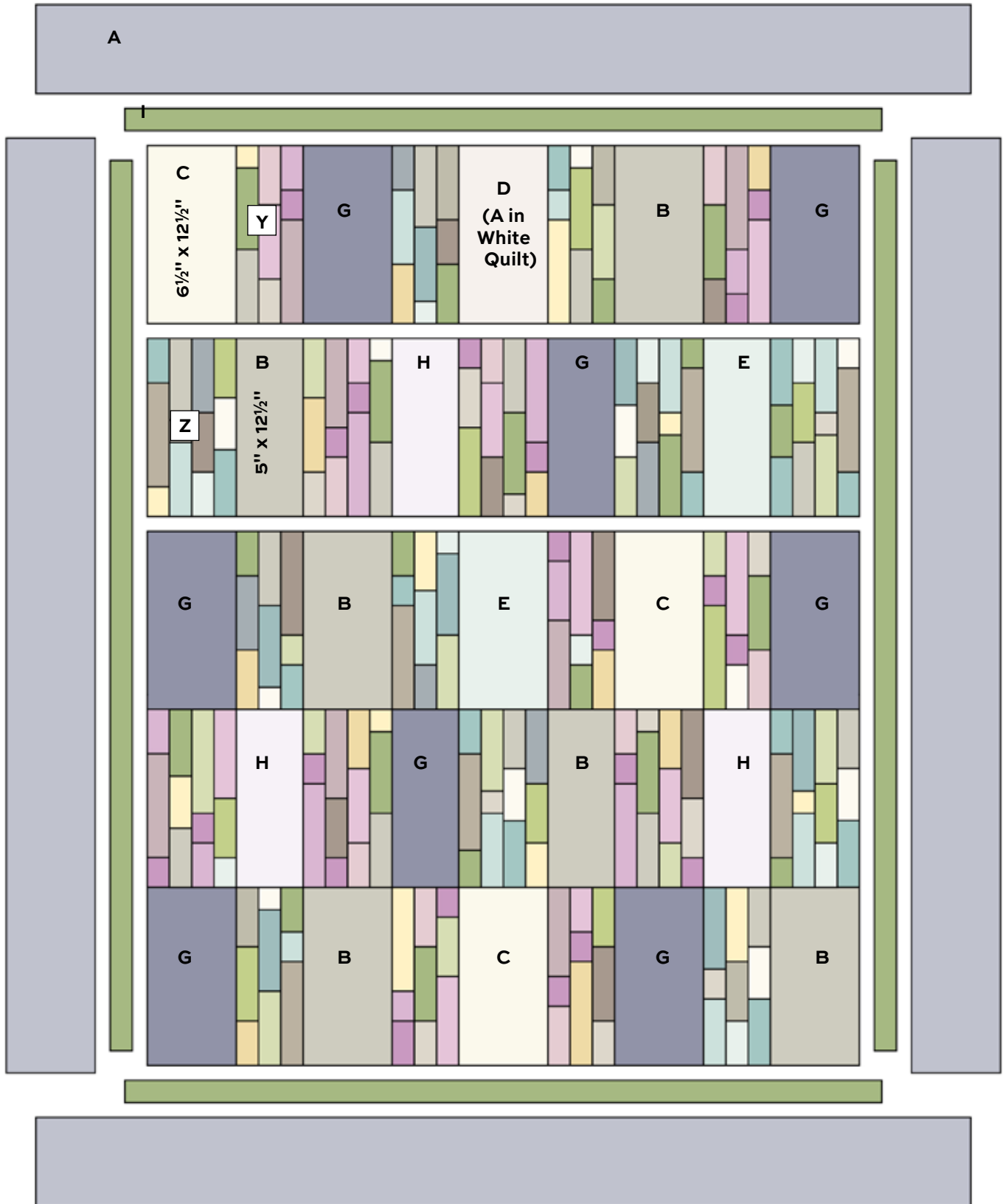
Dragonflies Abloom Quilt



**Pillow
Assembly**



Dragonflies Abloom Quilt



Abloom RENÉE NANNEMAN



862-B



862-C



862-L



863-B



863-T



869-B



869-L



864-C



864-P



864-T



865-C



865-G



865-P



866-G



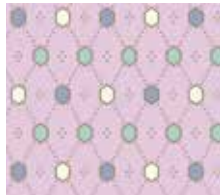
866-P



866-Y



867-C



867-P



867-T



868-C



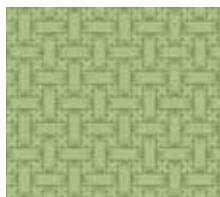
868-T



868-Y



870-C



870-G



870-T



871-L



871-P



871-T

All fabrics are used in quilt pattern. Fabrics shown are 50% of actual size.